

Gifts from Nature's Peatlands

A Macro Photography Presentation for the RRR2021 Peatland Conference



www.tinaclaffey.com







Lens Canon 100mm L Series F2.8
1/100 sec F9 ISO 100

Sphagnum Underworld



Lens Canon 100mm L Series F2.8
1/200 sec F5.6 ISO 100

Sphagnum cuspidatum



Lens: Canon MP-E 65mm Macro 1-5x
1/160 sec F2.8 ISO 100
FOCUS STACK of 8 images

Sphagnum Bouquet



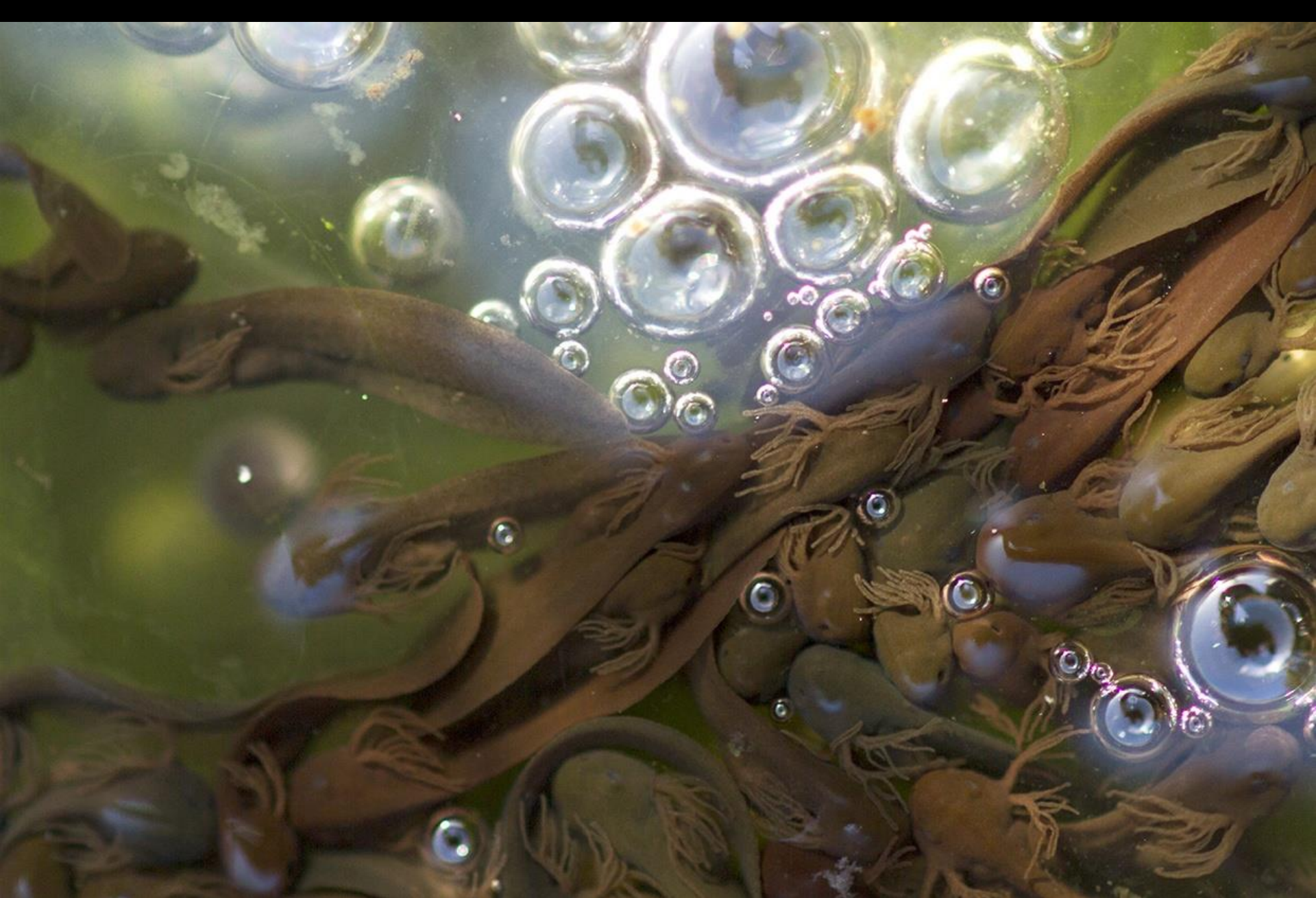
Lens Canon 100mm L series Macro
1/250 F7.1 ISO 400

Nature's Eye



Lens Canon 100mm L Series Macro
1/400 F5.6 ISO 400

Tadpole Life



Lens Canon 100mm L series F2.8
1/250 sec F2.8 ISO 400

Frenzy of Newts



Lens: Canon 100mm Macro L
series F2.8
1/800 F5 ISO400

Marsh Marigold



Lens: Canon 100mm Macro F2.8
1/400 F5 ISO400
FOCUS STACK of 11 images

Scarlet Elfcup



Lens: Canon MP-E 65mm 1-5x Macro F2.8
1/250 sec F2.8 ISO 400
FOCUS STACK of 4 images

Emerging Spore



Lens: Canon MP-E 65mm 1-5x
Macro F2.8
1/1000 F4 ISO100

Unfurling Fern



Lens: Canon 100mm L series Macro F2.8
1/320 F4 ISO100

Pond Skaters



Lens: Canon 100mm L series
Macro F2.8
1/500 F8 ISO400

Cuckoo Spit-Froghopper



Lens: Canon 100mm L series
Macro F2.8
1/125 sec F5 ISO 400

Caddisfly Case



Lens: Canon 100mm L series
Macro F2.8
1/160 sec F2.8 ISO 400

Caddisfly Larva



Lens : Canon MP-E65mm Macro
F2.8 1-5x
1/250 sec F5 ISO 1600

Mating Snails



Lens: MP-E65mm Macro 1-5x
F2.8
1/320 F5 ISO 1250
FOCUS STACK of 9

Hairy Shieldbugs



Lens Canon MP-E 65mm 1-5x F2.8
1/160 F2.8 ISO 1250
FOCUS STACK of 8

Bronze Shieldbug Eggs

Orange Spot Egg



Lens: Canon MP-E65mm 1-5x F2.8
1/250 F8 ISO 400



Lens: Canon 100mm L series F2.8
1/500 sec F3.2 ISO 100

Lady's Smock/Cuckoo Flower

Horsetail



Lens: Canon 100mm L series F2.8
1/320 sec F5.6 ISO 400
FOCUS STACK of 12



Lens: Canon MP-E65mm Macro
F2.8 1-5x
1/500sec F4 ISO 1250
FOCUS STACK of 6

Catsear



Lens: Canon 100mm Macro L
series F2.8
1/200 F7.1 ISO400

Bogbean



Lens: Canon MP-E65mm Macro F2.8 1-5x
1/250sec F6.3 ISO 400
FOCUS STACK of 6

Tormentil

Lens: Canon 100mm L series F2.8
1/1200 sec F8 ISO 200



Banded Demoiselle



Lens: Canon 100mm L series F2.8
1/ 125 F5.6 ISO400

Large Red Damselfly



Lens Canon 100mm L Series
F2.8
1/160 sec F5.6 ISO 400

Foxmoth



Lens: Canon 100mm L series F2.8
1/200 sec F5.6 ISO100

Dark Tussock moth



Dark Tussock Feet

Lens: Canon 65mm MP-E65mm F2.8
Lens: 1/200 F5.6 ISO400
FOCUS STACK of 4



Lens: Canon MP-E 65mm F2.8 1-5x
1/400 sec F5 ISO400
FOCUS STACK of 21

Emperor Moth



Canon MP-E65mm f/2.8 1-5x
Macro
1/200 sec; f/8; ISO 400
FOCUS STACK OF 6

Bog Rush



Bog Asphodel

Lens: Canon MP-E65mm F2.8 1-5x
1/400 sec F4.5 ISO400
FOCUS STACK of 12



Lens: Canon MP-E65mm F2.8 1-5x
1/250 sec F4 ISO400
FOCUS STACK of 9

Emerging Sundew



Lens: Canon 100mm L series F2.8
1/1250 sec F5.6 ISO100

Sundew
Sun Goddess



Lens: Canon 100mm L Series F2.8
1/30 sec F2.8 ISO 100

Menacing Crown



Lens: Canon MP-E 65mm F2.8 1-5x
1/125 sec F2.8 ISO 400
FOCUS STACK of 3

Sundew Tentacle



Great Sundew

Lens: Canon MP-E 65mm F2.8
1-5x
1/640 sec F2.8 ISO 400
FOCUS STACK of 2



Lens: Canon 100mm L Series F2.8
1/400 sec F6.3 ISO400

Common Cross Orb Weaver



Lens: Canon 100mm L Series F2.8
1/640 sec F4 ISO400

Raft Spider



Lens: Canon MP-E 65mm F2.8 1-5x
1/250 sec F5.6 ISO 1600
FOCUS STACK of 10

Raft Spider with Egg Sac



Lens: Canon 100mm L Series F2.8
1/500 sec F8 ISO400

Wolf Spider



Canon EF24-105mm f/4L IS USM
1/30 sec F13 ISO400
Tripod

Morning Mist at Finnamore



Lens: Canon 100mm L Series F2.8
1/1600 sec F5 ISO200

Marsh Fritillary



Lens: Canon 100mm Macro L series F2.8
1/1000 F5 ISO400

Common Blue



Lens: Canon 100mm Macro L
series F2.8
1/800 F5.6 ISO400

Green Hairstreak



Lens: Canon 100mm L Series F2.8
1/640 sec F7.1 ISO400

Large Heath

*Narrow Bordered 6 Spot
Burnet moth*



Lens: Canon 100mm L Series
F2.8
1/400 sec F8 ISO400

*Metamorphosis
Dragonfly Case*



Lens: Canon 100mm L Series
F2.8
1/320 sec F10 ISO400



Lens: Canon 100mm L Series F2.8
1/8000 sec F5.6 ISO400

Four Spot Chaser



Lens: Canon MP-E 65mm F2.8 1-5x
1/100 sec F7.1 ISO400
FOCUS STACK of 5

Grasshopper



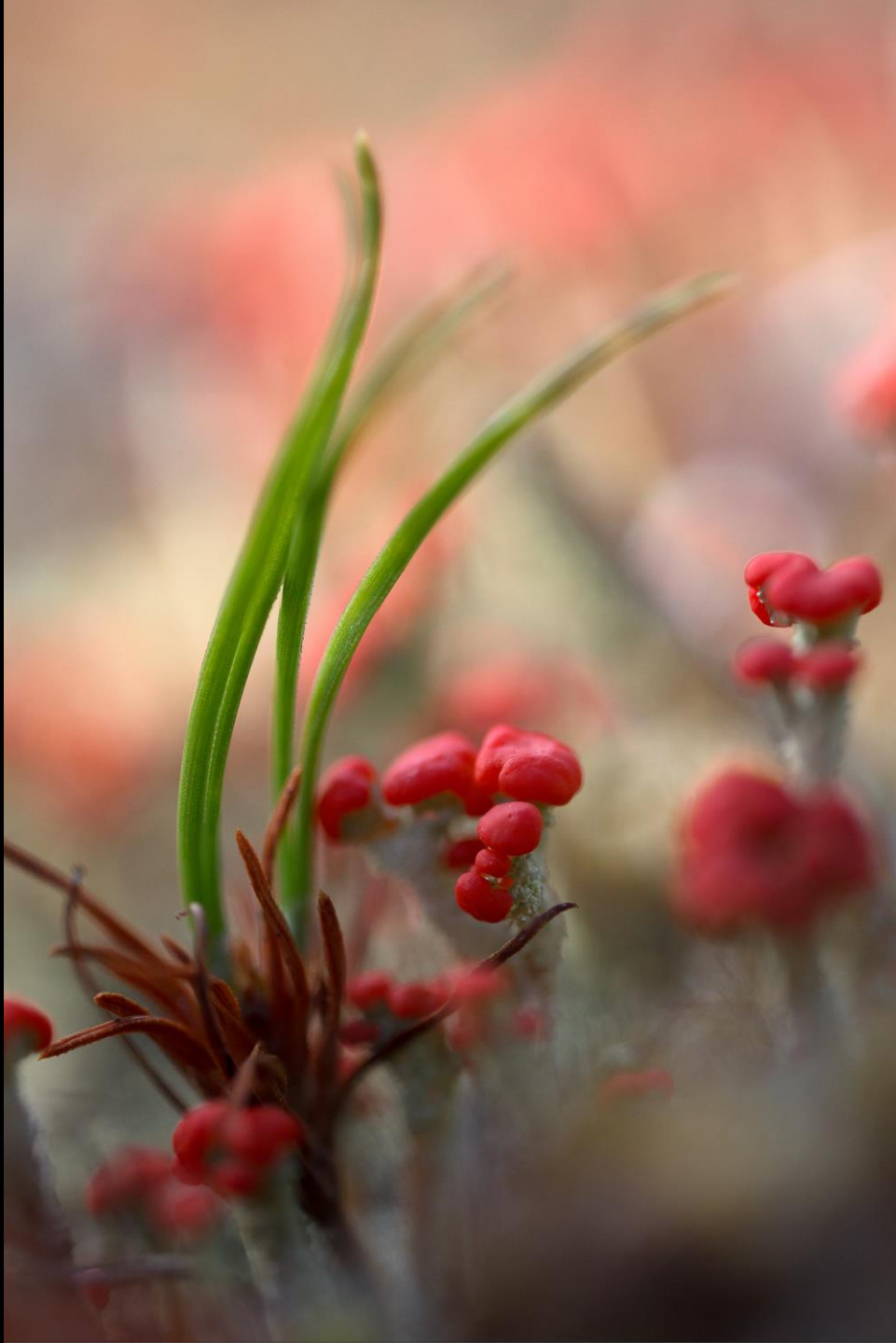
Lens: Canon MP-E 65mm F2.8 1-5x
1/1600 sec F2.8 ISO400
FOCUS STACK of 13

Lone Matchstick



Lens: Canon MP-E 65mm F2.8
1-5x
1/800 sec F5 ISO400
FOCUS STACK of 12

Matchstick Tree



Lens: Canon MP-E 65mm F2.8 1-5x
1/800 sec F2.8 ISO400
FOCUS STACK of 7

Devil's Matchsticks



Lens: Canon 100mm L Series
F2.8
1/200 sec f/4.5 ISO 1600

Matchstick Bouquet



Lens: Canon MP-E 65mm F2.8 1-
5x
1/800 sec F2.8 ISO400
FOCUS STACK of 14

Wild Strawberry



Lens: Canon 100mm L series F2.8
1/320 sec F 2.8 ISO 400

Sunset Grasses



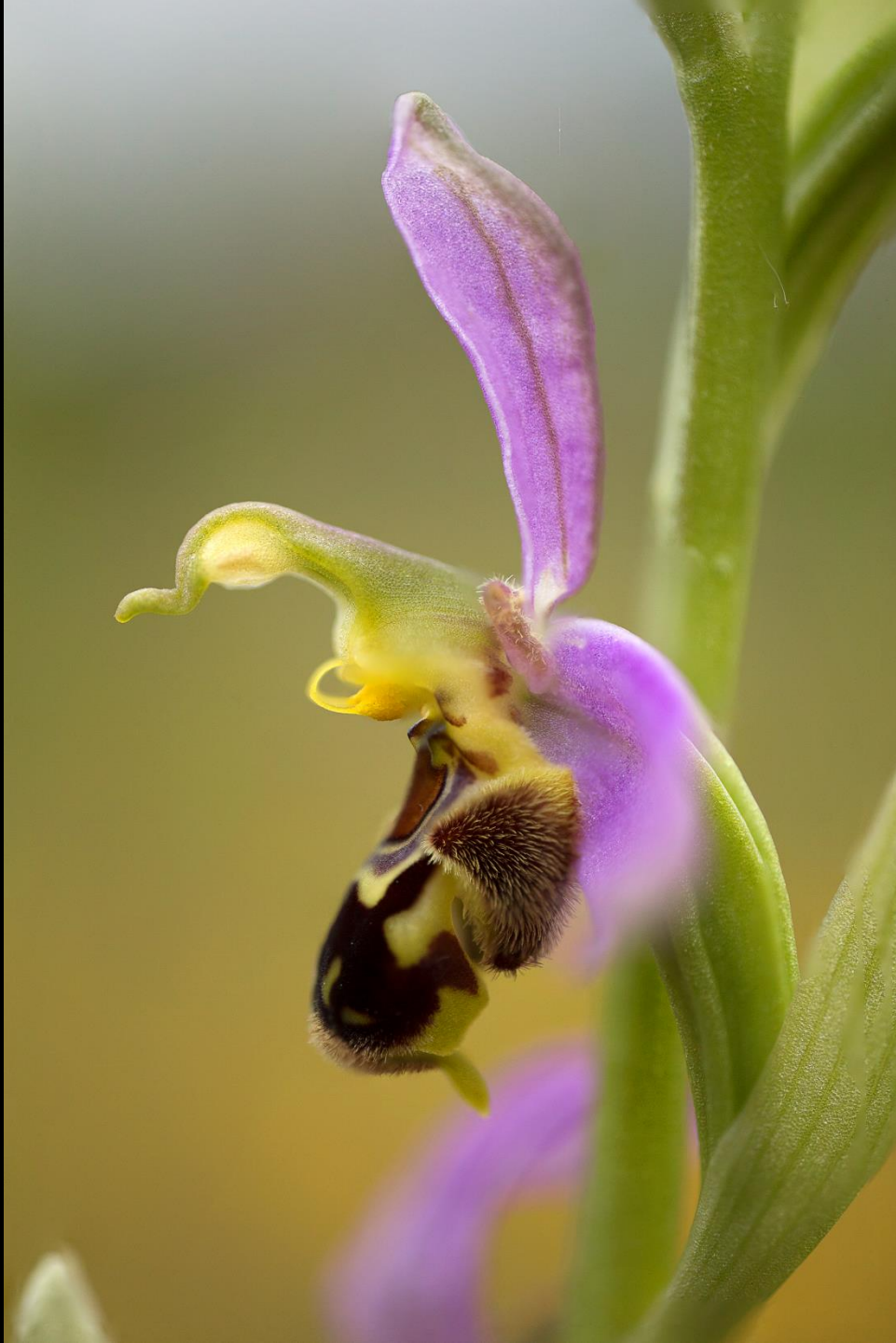
Lens: Canon MP-E 65mm F2.8 1-5x
1/320 sec F5.6 ISO400
FOCUS STACK of 8

Quaking Grass



Lens: Canon MP-E 65mm Macro
F2.8 1-5x
1/500 sec F2.8 ISO400
FOCUS STACK of 13

Common Spotted Orchid



Lens: Canon MP-E 65mm F2.8 1-5x
1/1600 sec F2.8 ISO400
FOCUS STACK of 17

Bee Orchid



Lens: Canon 100mm L series F2.8
1/1600 sec F5.6 ISO400

Marsh Helleborine orchid



Lens: Canon EF 70-200mm F2.8USM
1/500 sec F5.6 ISO200

Hare's Tail Bog Cotton



Lens: Canon EF 70-200mm F2.8USM
1/1250 sec F2.8 ISO400

Bog Cotton Sundown



Lens: Canon 100mm L Series F2.8
1/2500 sec F2.8 ISO400

Last Light Bog Cotton



Lens: Canon EF 70-200mm
F2.8USM +1.4x Extender
1/800 sec F4 ISO400

Loosestrife



Lens: Canon 100mm L Series F2.8
1/400 sec F5 ISO400

Nature's Pearls



Lens: Canon 100mm L Series F2.8
1/320 sec F2.8 ISO400
FOCUS STACK of 15

Cranberry



Lens: Canon 100mm L Series F2.8
1/320 sec F4 ISO400

Ladybird in Drizzle



Lens: Canon EF 70-200mm F2.8
1/250 sec F5.6 ISO 200

Bog Birch Sunset





Lens: Canon 100mm L Series F2.8
1/400 sec F8 ISO400

Ling Heather



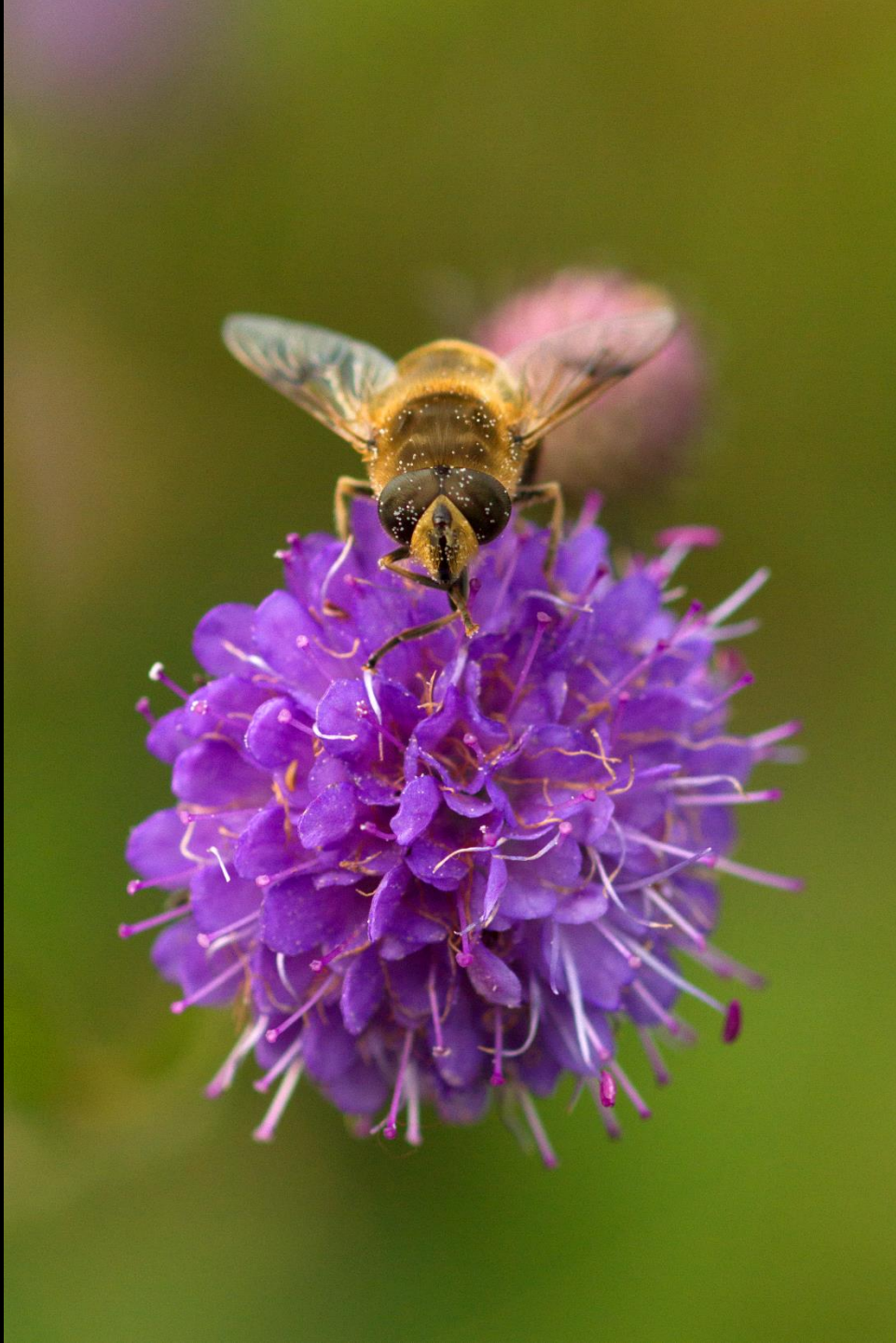
Lens: Canon 100mm Macro L
series F2.8
1//500 F4.5 ISO400

Devil's Bit Scabious



Lens: Canon 100mm L Series F2.8
1/400 sec F8 ISO400
FOCUS STACK of 3

Birch Shieldbug



Lens: Canon 100mm L Series F2.8
1/1250sec F5 ISO400

Hoverfly Bee on
Devil's Bit Scabious



Lens: Canon MP-E 65mm F2.8 1-5x
1/1000 sec F6.3 ISO1250
FOCUS STACK of 8

Spiked Shieldbug



Lens: Canon 100mm L Series F2.8
1/1250 sec F3.2 ISO400

Reindeer Lichen Tree



Lens: Canon MP-E65mm F2.8 1-5x
1/640 sec F4 ISO400
FOCUS STACK of 4

Pixie Cup Lichen



Lens: Canon MP-E 65mm F2.8
1-5x
1/320 sec F5 ISO400
FOCUS STACK of 7

Pixie Cup Crystal Ball



Lens: Canon MP-E 65mm
F2.8 1-5x
1/250 sec F4 ISO400
FOCUS STACK of 8

Lichen Cup Droplet



Lens: Canon MP-E 65mm F2.8
1-5x
1/160 sec F4 ISO400
FOCUS STACK of 8

Orange tip Lichen



Lens: Canon 100mm L Series F2.8
1/400 sec F5.6 ISO400

Green Elfcup



Lens: Canon 100mm L Series F2.8
1/125 sec F2.8 ISO400

Turkey Tail



Lens: Canon MP-E65mm F2.8 1-5x
1/1250 sec F2.8 ISO 1600
FOCUS STACK of 17

Dewdrop Bonnet



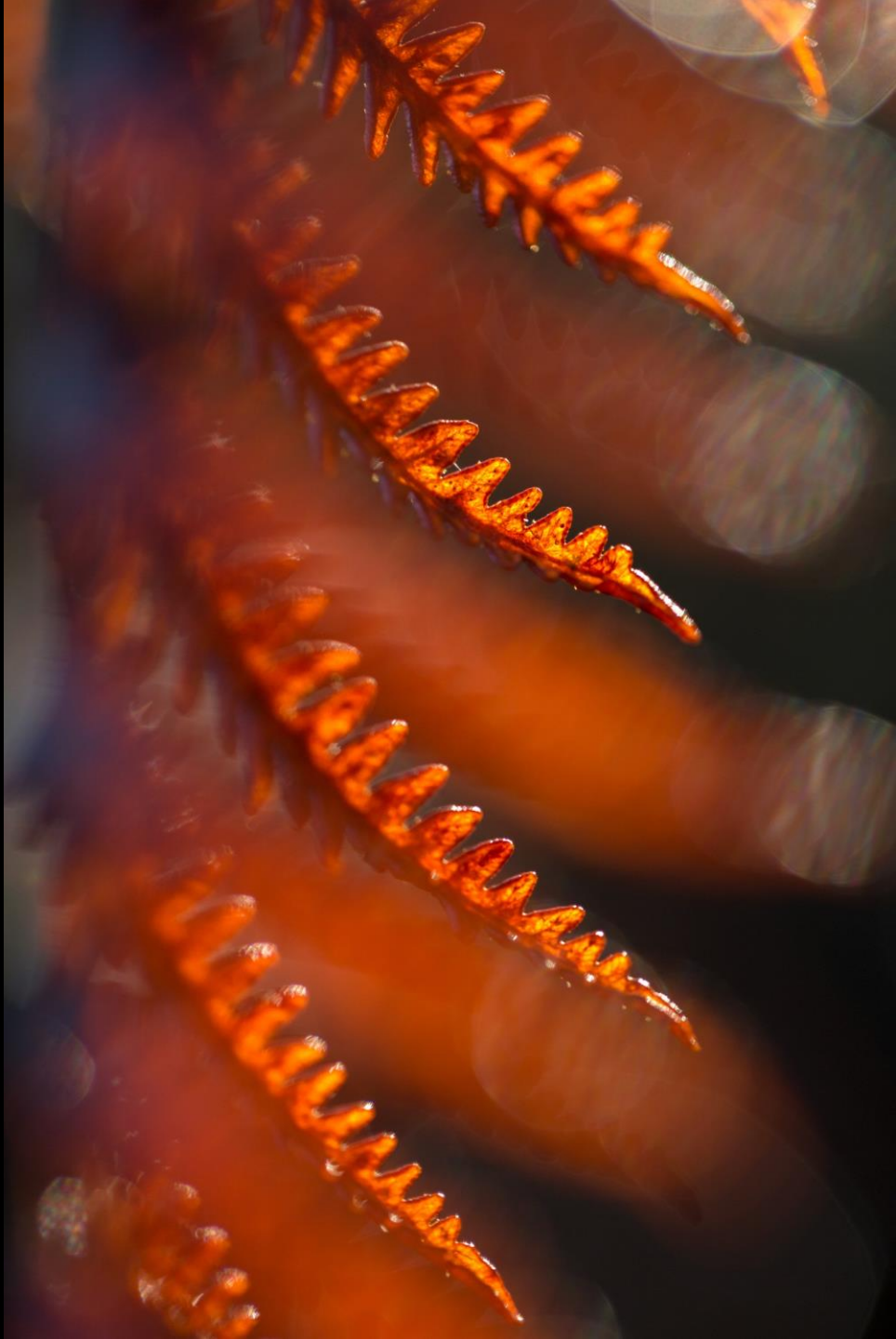
Lens: Canon 100mm L Series F2.8
1/250 sec F5.6 ISO400

Bog Asphodel



Lens: Canon EF 75-200mm F2.8L USM
1/250 sec F4 ISO400

Reflection Symmetry



Lens: Canon 100mm L Series F2.8
1/800 sec F2.8 ISO400

November Fiery Bracken



Lens: Canon 100mm L Series F2.8
1/320 sec F3.5 ISO400
FOCUS STACK of 5

Bracken Fungi



Canon EF70-200mm f/2.8L USM
1/800 F5 ISO400

Beard Frost



Lens: Canon 70-200mm L Series F2.8
1/1600 sec F2.8 ISO400



Lens: Canon 70-200mm L Series F2.8
1/500 sec F3.5 ISO400



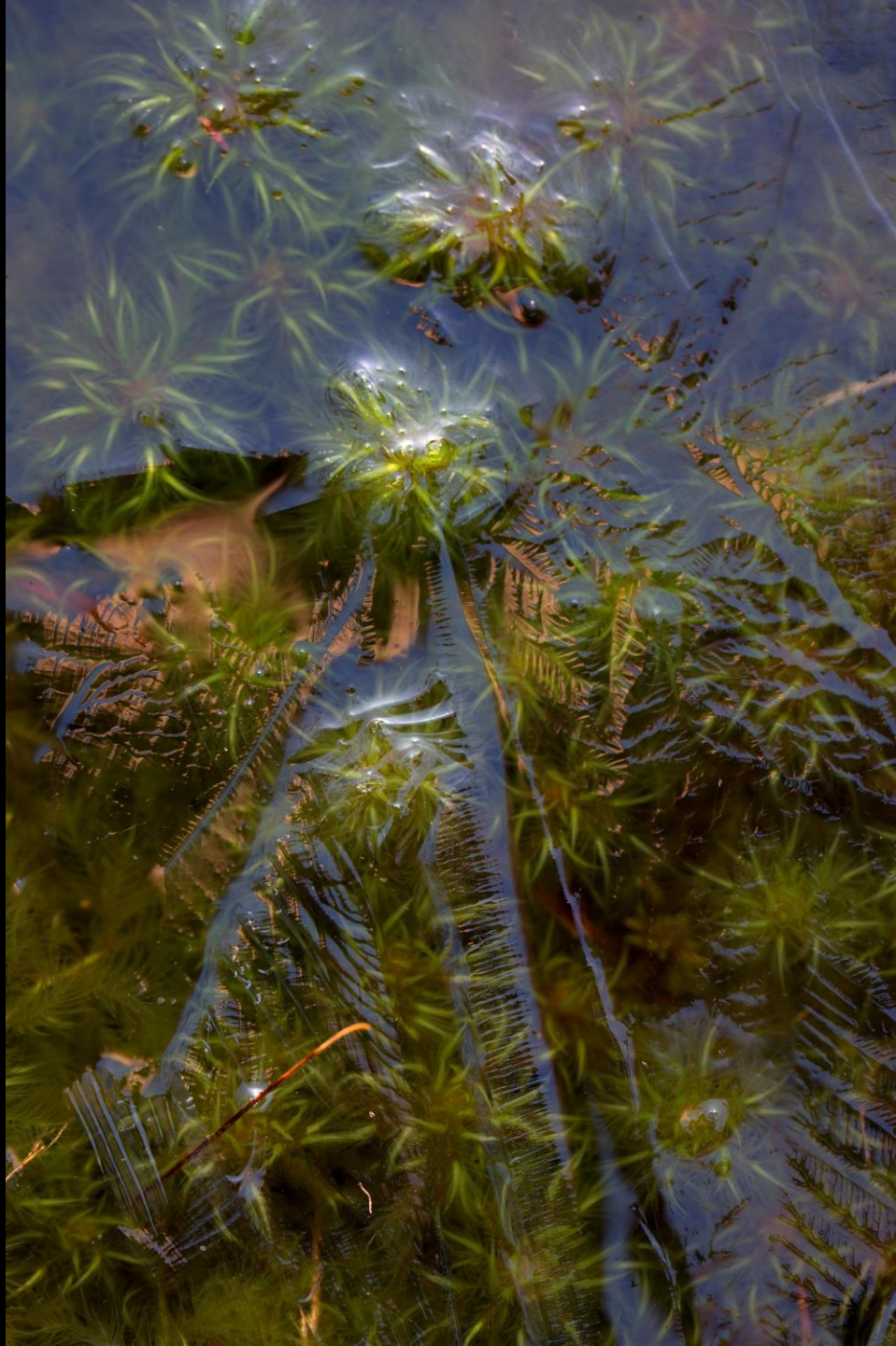
Lens: Canon MP-E 65mm F2.8 1-5x
1/250 sec F6.3 ISO400
FOCUS STACK of 27

Frosted Fungi



Lens: Canon MP-E 65mm
F2.8 1-5x
1/320 sec F2.8 ISO400
FOCUS STACK of 9

Moss Ice Towers



Lens: Canon 100mm L Series
F2.8
1/60 sec F5 ISO400

Sphagnum Ice Tree



Lens: Canon MP-E 65mm
F2.8 1-5x
1/250 sec F2.8 ISO400
FOCUS STACK of 12

Frosted Matchstick



Lens: Canon 100mm L Series F2.8
1/250 sec F2.8 ISO100

Frozen Dreamcatcher



Tina C
PHOTOGRAPHY

Lens: Canon 70-200mm L Series F2.8
1/400 sec F5 ISO400

Frosted Bog Asphodel



Lens: Canon 100mm L Series
F2.8
1/320 sec F2.8 ISO400

Frozen Sphagnum

TAPESTRY OF LIGHT

Ireland's bogs and wetlands as never seen before



TINA CLAFFEY

ARTISAN HOUSE

EQUIPMENT



CAMERAS

Canon 5D Mark III

Canon 7d

LENSES

Canon 100mm L series F2.8

Canon MP-E 65mm Macro 1-5x F2.8

Canon 70-200mm L Series F2.8 & Canon EF 1.4x Extender

Canon 24-105mm

Canon 16-35mm

Pop up Diffuser/Reflector

Waterproof trousers/Jacket, and Foam knee pads!

www.tinaclaffey.com

Facebook: Tina Claffey Photography

Instagram: tinaclaffeyphotography

Twitter: @TinaClaffey

Email: tinaclaffey@gmail.com

